

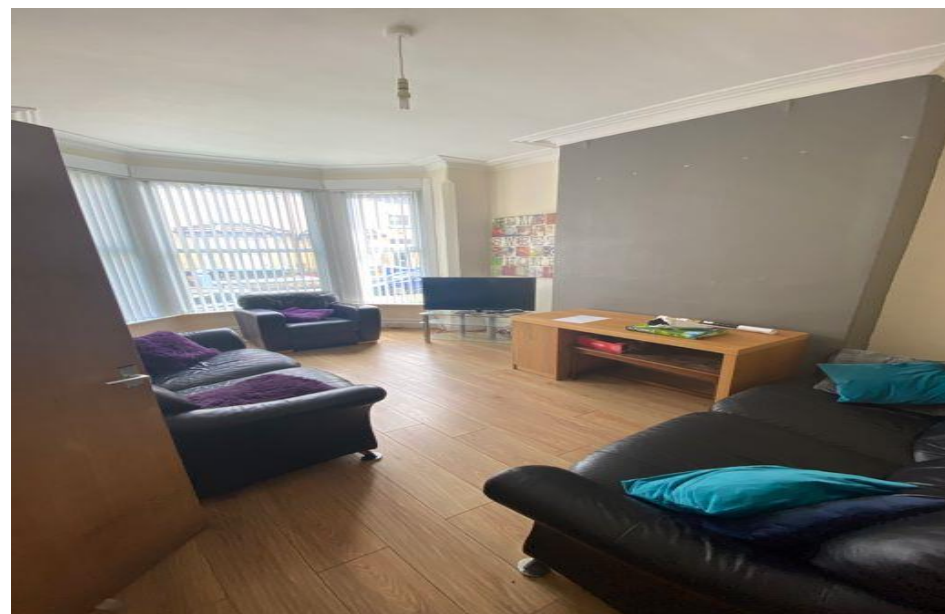


# iCCOMMODATE

Property Management, Lettings and Maintenance

Borrowdale Road  
Liverpool, L15 3LD

**Available 2024/25 Academic Year**



Score	Energy rating	Current	Potential
92+	A		
81-91	B		
69-80	C		77 C
55-68	D		
39-54	E	54 E	
21-38	F		
1-20	G		

**\*\* Available July 2024\*\***

**\*\*Half Summer rent - July & August 2024\*\***

iCCOMMODATE are pleased to offer this large 7 double bedroom property on Borrowdale Road, L15. The property benefits from a spacious kitchen with adjoining utility room, communal living room, 7 double bedrooms furnished with double bed, desk, and bedroom furniture and two bathrooms.

Deposit is £200.00 per person and each applicant must provide a UK based guarantor.

The rent is £115pppw (£498.33ppm) \*inclusive of bills - (gas, water, tv license, electric and broadband)

\*(Gas & electric capped at £2200 per annum)

- Spacious 7 bedroom property
- Burglar alarm with motion sensors
- Ideal for students
- Large living room

**Email: [info@iccommodate.co.uk](mailto:info@iccommodate.co.uk) / Tel: 0151 291 1770**

# TO LET



Zoopla



[www.iccommodate.com](http://www.iccommodate.com)